

# Mini Spider Cranes

279

- Total width 1.4m
- Max working radius 15.52m
- Diesel engine and optional mains electric
- Zero length increase with electric option
- Operator control of outrigger extension
- Intelligent voice warning system
- Radio remote control as standard
- Working area limitation
- Slew limitation (optional)
- Intelligent throttle activation for economy and ecology



Max Boom Length 15.71m

Max Lifting Height 16m

Weight 4840 - 4990kg

Capacity 3.0t x 3.4m

Optional fly jib & searcher hook

• Lifting capacity 700kg (max)  
 • Length 2017mm  
 • Weight 80kg  
 • Tilt angles 0°, 20°, 40°, 90°

## URW-506 [3.0t x 3.4m]

The URW-506 offers an optimal combination of flexibility and heavy lifting power.

This crane is capable of lifting 3 tonnes at 3.4m or up to 4 tonnes with an optional 5 fall hook block.

As with all the UNIC spider crane models carrying a safe load indicator, the URW-506's working area limitation device allows the operator to pre-define the lifting area parameters giving greater control and safety in sensitive areas.

On approaching these limits, function speeds are reduced and an audible alarm is given before operation stops.

### Reference Code

**MCU506**

### Remotes



Standard radio remote control



Optional radio remote control with digital feedback

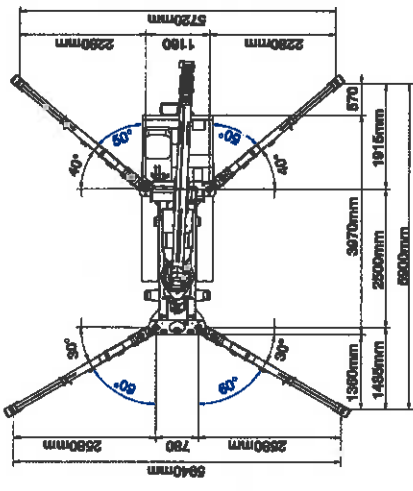
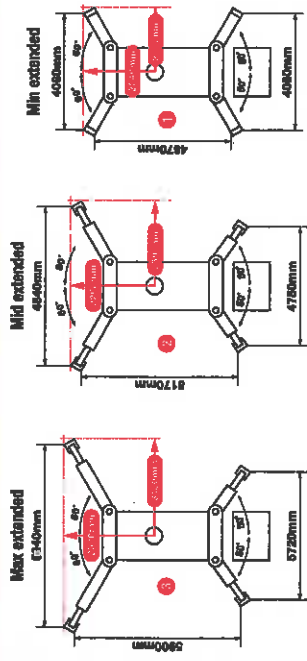
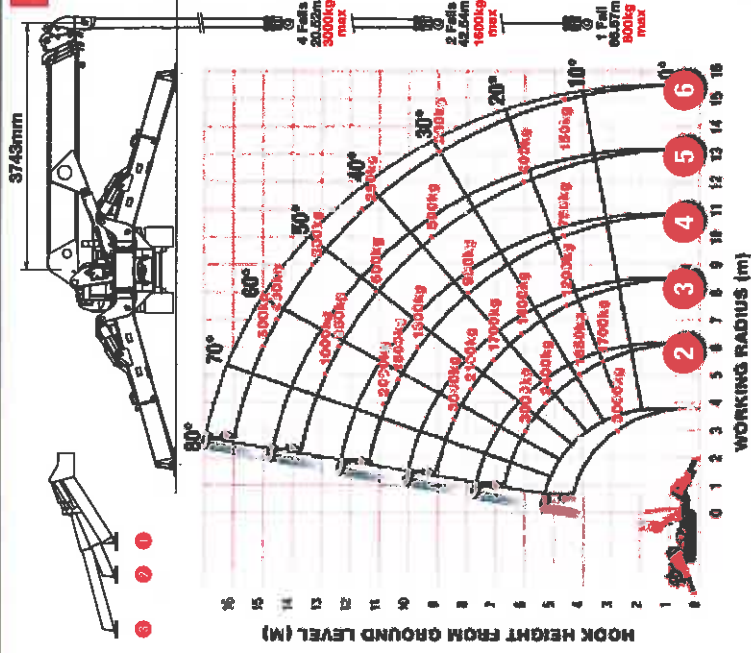
### Crane Specifications

Crane capacity	approx. max:	3.0t x 3.4m (506-1 4.0t x 2.5m with 5 fall hook block)
Max working radius	approx.	15.52m
Max lifting height	max:	16m (17.79m with fly jib, 18.46m with searcher hook)
Reach height	max:	20.52m (4 fall), 42.54m (2 fall), 86.57m (1 fall)
Dimensions	folded:	4870mm (l) x 1400mm (w) x 2035mm (h)
Weight	unladen	4940kg (4990kg with electric option)
Self-weighing	Due to the many variables involved, point loadings are only available on request	
Hook speed	approx.	17m/min (with 4 falls and 4 falls)
Telescopic boom	boom length:	3.93 - 15.71m
Hydraulic engine option	telescoping speed:	11.7m/35 seconds
Standard hydraulic	boom type:	6 section hydraulically telescoping boom, hexagonal box construction
Truck towing	approx.	0 - 60°/18.0 seconds
Engine	drive:	360° (continuous) 2.5 rpm
	travel speed:	hydraulic 2-speed, stepless forward and reverse
	gradeability:	0 - 36m/h
	track ground length:	±(23)
	track ground pressure:	1750mm
	track width:	45.1kPa (0.48kg/cm²)
	manufacturer:	300mm
	fuel:	Mitsubishi / Yanmar
	starting method:	diesel (electric dual power option)
	tank capacity:	18kW (24.5PS) / 2100min rpm
	power:	electric
	voltage:	40 litres
	output:	7.5kW
	overload protection:	400V AC 50/60Hz

computer controlled moment limiter (safe load indicator), radio remote control, overwinding alarm, computer controlled intelligent voice warning system, multi-function operation by radio remote control, intelligent throttle activation, automatic hook stop, overload warning alarms, overload warning lamps, working area limitation

1 fall hook block, 2 fall hook block, 5 fall hook block (URW-506-1), mains electric dual power (400v), low marking tracks, slew limitation, 500kg capacity small searcher hook, 700kg maximum capacity searcher hook, 700kg maximum capacity fly jib with single part line, radio remote control with feedback display, data logging

# URW-506 Spider Crane



**SECOND STAGE EXTENDED 8.33 - 8.33M BOOM LENGTH**

Working radius	m	up to 2.5	3.0	3.4	4.0	4.5	5.0	5.5	6.0
Max-extended	kg	3,000 (4,000)	3,000 (3,350)	3,000	2,400	2,100	1,850	1,700	1,550
Mid-extended	kg	3,000 (4,000)	3,000 (3,350)	3,000	2,400	2,100	1,850	1,700	1,400
Min-extended	kg	3,000 (4,000)	3,000 (3,350)	3,000	2,400	2,000	1,650	1,350	1,100

\* Loads shown in blue are applicable for the 5 fall hook block URW-506-1 only. All other loads shown in black apply to both the standard URW-506 and the URW-506-1.

**THIRD STAGE EXTENDED 6.33 - 6.72M BOOM LENGTH**

Working radius	m	up to 3.0	3.4	4.0	4.5	5.0	5.5	6.0	6.5	7.0	7.5	8.53
Max-extended	kg	3,000	3,000	2,400	2,100	1,850	1,700	1,550	1,400	1,300	1,200	1,000
Mid-extended	kg	3,000	3,000	2,400	2,100	1,850	1,700	1,400	1,200	1,050	850	820
Min-extended	kg	3,000	3,000	2,400	2,000	1,650	1,350	1,100	900	750	600	450

**FOURTH STAGE EXTENDED 6.72 - 11.06M BOOM LENGTH**

Working radius	m	up to 4.0	4.5	5.0	5.5	6.0	7.0	8.0	9.0	10.0	10.86
Max-extended	kg	2,000	1,800	1,600	1,450	1,300	1,100	950	850	750	640
Mid-extended	kg	2,000	1,800	1,600	1,450	1,300	1,050	700	600	450	300
Min-extended	kg	2,000	1,800	1,600	1,350	1,100	750	500	400	300	250

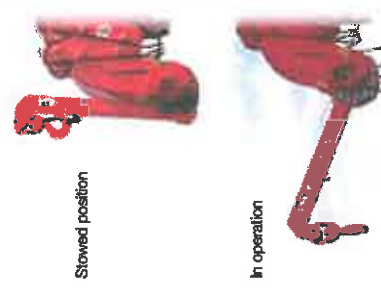
**FIFTH STAGE EXTENDED 11.06 - 13.31M BOOM LENGTH**

Working radius	m	up to 5.0	5.5	6.0	7.0	8.0	9.0	10.0	11.0	12.0	13.19
Max-extended	kg	1,000	920	850	700	600	550	500	400	350	350
Mid-extended	kg	1,000	920	850	700	600	520	450	390	300	250
Min-extended	kg	1,000	920	850	700	500	400	300	250	200	170

**SIXTH STAGE EXTENDED 13.31 - 15.71M BOOM LENGTH**

Working radius	m	up to 6.0	7.0	8.0	9.0	10.0	11.0	12.0	14.0	15.82
Max-extended	kg	500	400	350	300	250	200	150	150	150
Mid-extended	kg	500	400	350	300	250	200	150	150	150
Min-extended	kg	500	400	350	300	250	200	170	150	100

Searcher Hook Small - 500kg



<b>Lifting capacity</b>	500kg sections 1-5
	280kg section 6
<b>Length</b>	800mm
<b>Weight</b>	20kg
<b>Tilt angles</b>	0°, 20°, 40°, 60°

Searcher Hook

Maximum Load 350kg - 700kg (radius retracted)



Fly Jib

Maximum Load 350kg - 700kg (angle retracted)



Dimensions

